



THE WREN

NURTURE · CHALLENGE · INSPIRE

Uniform and Dress Code Policy 2025

Purpose

At The Wren we believe that having a uniform and dress code helps nurture a sense of community, cohesion and identity, and importantly helps to act as a social leveller within our school setting.

The purpose of this policy is to guide staff, students and families on the expectations, standards and rationale for our student school uniform and dress code. This policy aims to:

- set out our approach to requiring a uniform that is of reasonable cost and offers the best value for money for families;
- explain how we will avoid discrimination in line with our legal duties under the Equality Act 2010;
- clarify our expectations and standards for school uniform and dress code.

Management of the policy

| | |
|-------------------------|---|
| School: | This policy is managed by the Principal and the wider Senior Leadership Team. |
| Approval: | By the Principal and Academy Committee, and updated June 2025, in place for the start of September 2025 |
| Next review due: | June 2026 |

Links to other policies

This policy is linked to our:

- Behaviour policy
- Complaints policy
- Equality objectives report
- Financial Support Fund policy
- Family and school agreement

These policies can be viewed here: <https://wren.excalibur.org.uk/families/our-school/school-policies/>

Our legal duties under the Equality Act 2010

The [Equality Act 2010](#) prohibits discrimination against an individual based on the protected characteristics, which include sex, race, religion or belief, and gender reassignment.

To avoid discrimination, our school will:

- avoid listing uniform items based on sex, to give all students the opportunity to wear the uniform they feel most comfortable in or that most reflects their self-identified gender;
- make sure that our uniform costs the same for all students where possible;
- allow all students to have long hair (though we reserve the right to ask for this to be tied back);
- allow all students to style their hair in a way that is appropriate for school yet makes them feel most comfortable (the Principal will be the arbiter of what constitutes an appropriate style);
- allow students to wear headscarves and/or other religious garments;
- allow students with sensory needs or physical needs to, in consultation and agreement with the SENDCO, to have reasonable adaptations made to their uniform depending on their specific needs;
- allow for adaptations to our policy on the grounds of equality by asking students or their families to get in touch with their relevant Progress Leader, who can answer questions about this policy and respond to any requests. These will be considered on a case-by-case basis.

Limiting the cost of school uniform

Our school has a duty to make sure that the uniform is affordable, in line with [statutory guidance](#) from the Department for Education on the cost of school uniform.

We understand that items with distinctive characteristics (such as branded items, or items that must have a school logo or a unique fabric/colour/design) cannot be purchased from a wide range of retailers and that requiring many such items limits families' ability to 'shop around' for a low price.

We will make sure our uniform:

- is available at a reasonable cost;
- provides the best value for money for families.

We will do this by:

- maximising the options available;
- carefully considering whether any items with distinctive characteristics are necessary;
- limiting any items with distinctive characteristics where possible;
- limiting items with distinctive characteristics to low-cost or long-lasting items;
- considering cheaper alternatives to school-branded items;
- keeping the number of optional branded items to a minimum, so that the school's uniform can act as a social leveller;
- avoiding different uniform requirements for different groups;
- making sure that arrangements are in place for families to acquire second-hand uniform items;

- avoiding frequent changes to uniform specifications and minimising the financial impact on families of any changes;
- consulting with families and students on any proposed significant changes to the uniform policy and carefully considering any concerns about the policy.

Expectations for school uniform

Our school's uniform and dress code

Key Stage 3 and 4

All students are expected to always wear school uniform, which is outlined below.

Our uniform allows students to pick from a wardrobe of options outlined below.

See appendix A for our uniform guide and accompanying images.

All students must wear/have the following items.

Shoes

School shoes must be plain black, flat, formal polishable shoes.

Trainers, trainer like shoes, crocs, sliders, boots or canvas shoes cannot be worn. Logos must not be visible. The Principal will be the arbiter of what constitutes appropriate school shoes.

Examples of acceptable shoes are shown in Appendix B. If in doubt, please check with the school before purchasing new shoes.

Tights / Socks

Tights must be plain grey, black or natural coloured only.

Socks must be plain in style, undecorated and one colour, plain grey or black. No patterns, frills or logos.

When socks are worn over tights, they must be of the same colour as the tights.

White socks are not permitted to be worn, except as part of the approved PE and Dance kit. See page 5.

Trousers / Shorts

Must be grey tailored trousers or shorts, of formal convention cut and length in a plain material. Cargo shorts or trousers may not be worn. Any form of skin-tight trousers or shorts, leggings, jeans, chinos cannot be worn.

OR

Skirt

Plain grey pleated skirt to be worn. Skin-tight or tube fitting skirts cannot be worn.

Examples of acceptable trousers, shorts and skirts are shown in Appendix C. If in doubt, please check with the school before purchasing new items of uniform.

All students must then choose one of the following.

A Wren School **branded white** polo shirt, available from Stevensons or a **plain white** polo shirt.

OR

A **plain white** buttoned shirt with a plain collar. Both short and long-sleeved shirts are allowed.

The shirt must be tucked in, top button must be fastened and must be worn with the Wren School **branded tie**. Tie length should be to the last visible shirt button.

Students can then choose any of the following.

A Wren School **Navy Blazer** with Wren School branding, available only from Stevensons. The blazer is available in both standard (box) and fitted tailoring.

OR

A Wren School **Navy Cardigan** with Wren School branding, available only from Stevensons.

OR

A Wren School **Navy V Neck Jumper** with Wren School branding, available only from Stevensons.

Students cannot wear any other jumper or top apart from those listed here.

See appendix A for our uniform guide and accompanying images.

Students should also be aware of the following expectations.

Coats

A sensible coat should be worn in cold or wet weather, so that poor weather does not affect learning.

Hoodies, sweatshirts or non-uniform jumpers cannot be worn at any time.

All coats must be removed when entering the lobby area of any school building. They should be placed into bags or be carried in hands or over forearms only.

Outdoor Wear

No outside wear: scarves, gloves, hats etc. can be worn once the student has entered the school buildings past the lobby areas. Balaclavas and durags cannot be worn on school site.

Bags and equipment

All students must bring with them a school bag that is large enough to hold A4 exercise books and all expected school equipment.

Expected school equipment is shown in Appendix D.

Jewellery

A single small stud can be worn in each ear.

A single small stud can also be worn in the nose.

Simple watches can be worn. Smart watches and those which can connect to the internet cannot be worn.

No other jewellery is permitted.

All jewellery, including all watches must be removed for PE and other practical lessons.

Make-Up

Make-up should be kept to the minimum, be natural in colour and discreet.

Nail varnish, extensions, gels and eyelash extensions cannot be worn.

PE and Dance Kit

All students are expected to wear full PE kit for all their PE and Dance lessons, sports clubs and enrichment, which is outlined below.

See Appendix E for our PE and Dance kit guide and accompanying images.

Every lesson, students must wear (even if they are unable to fully participate due to injury):

- the Wren School PE shirt;
- plain black sports shorts, loose fitting in style, plain black tracksuit bottoms or plain black leggings. Sports leggings may be worn. These should be Lycra leggings and not cotton. Large logos and branding cannot be worn; small discreet logos are acceptable. Replica sports kits cannot be worn.

Every PE lesson, students must bring:

- sports trainers;
- football boots which must have either round moulded studs or plastic screw in studs. Astro turf trainers and boots with blade shaped studs and metal studs cannot be worn;
- long, plain black football socks are required for all invasion games. White crew sports socks are required for all other activities. Both socks should be available every lesson.

In every Dance lesson students are expected to go bare foot or to wear grip-socks as outlined in appendix E. Students are not allowed to wear trainers or regular socks in Dance lessons for health and safety reasons.

In cold weather students can wear:

- black, Wren School branded fleece or plain black jumper. Hooded tops, full-length zipped tops and coats cannot be worn for safety reasons.
- base layers, or equivalent, may be worn. If the base layer has long sleeves, then it must be black in colour;
- gloves may be worn at the discretion of the PE staff; this will relate to the safety requirements for each activity;
- for outside lessons in extreme cold weather a hat may be worn. For health and safety reasons, this must not have a bobble.

Sport specific requirements:

- for football, shin pads must be worn. For safety reasons students cannot participate in the competitive element of lessons without shin pads;
- gum shields are strongly advised for rugby. When representing the school in competitive league matches, a gum shield must be worn.

Safety requirements in PE:

- jewellery, which is acceptable within the Uniform Policy must be removed for PE, including a watch. Students must not get piercings which cannot be removed for PE lessons;
- hair must be tied up;
- scarves cannot be worn;
- for hygiene reasons, tights cannot be worn in PE.

Where to purchase uniform

All branded school uniform items can be purchased from our current uniform supplier Stevensons. To order uniform visit www.stevensons.co.uk. Pre-loved uniform can be purchased at a reduced rate through the school where available.

If families have any concerns around purchasing or acquiring the correct school uniform, they should contact the relevant Progress Leader who will be able to assist and support them.

Please also read our [Financial Support Fund Policy](#), which details how families can access financial support which can be used towards purchasing items of uniform.

Wren Six Dress Code

Our Wren Six students are expected to take pride in their appearance and therefore follow our dress code which we describe as 'work appropriate'. This will always apply when a student is on school site, unless a student is on a specific teacher approved activity that requires different clothing. The Principal will be the arbiter of what constitutes 'work appropriate'.

See appendix F for our Dress Code guide and accompanying images.

All students must wear/have the following items.

Lanyard

The yellow Wren Six lanyard must be worn, around the neck, at all times when on the school site.

Students must then follow our expectations which adheres to our 'work smart' dress code.

Shoes

'Work appropriate' shoes/boots and smart trainers suitable for a work environment are acceptable.

Heels or platform shoes, including boots with a heel, open toe footwear, crocs and sliders cannot be worn.

Trousers and equivalent items

'Work appropriate' trousers or jeans, tailored shorts and smart denim shorts are acceptable.

Ripped jeans, tracksuit bottoms, including cotton, polyester and similar tracksuit bottoms (i.e. loungewear) cannot be worn. Leggings can only be worn as an under garment but not as a standalone item. Ripped shorts, sports shorts, lycra shorts and ripped denim shorts cannot be worn.

Tops and equivalent items

'Work appropriate' t-shirts, collared polo shirts and collared shirts or blouses are acceptable.

Replica sports shirts, string strapped vests, crop tops, bardot tops (off-the shoulder) or equivalent cannot be worn.

Cardigans, round or V-neck jumpers, sweatshirts, hooded tops and fleeces are acceptable. *Some subject specific policies will not allow hooded tops due to safety regulations.*

For all garments, political, drug-related, offensive or inappropriate slogans, imagery or logos are prohibited. The Principal will be the arbiter of what constitutes offensive and inappropriate and may insist that the student returns home to change.

Dresses and skirts

'Work appropriate' dresses and skirts are allowed.

Religious items

Religious dress, including headwear may be worn.

Students should also be aware of the following expectations.

Coats

All coats must be removed when entering the lobby area of any school building. They should be placed into bags or be carried in hands or over forearms only.

Outdoor wear

No outside wear: scarves, gloves, hats etc. can be worn once the student has entered the school building and past the lobby areas.

Balaclavas and durags cannot be worn on the school site.

Tattoos

Tattoos are prohibited for students under the age of 18 in line with the law.

For students over the age of 18, tattoos can be seen but they must not be considered offensive or inappropriate. The Principal will be the arbiter of what constitutes offensive and inappropriate and may insist on tattoos being covered.

Jewellery and hair

There are no formal restrictions on jewellery and hair, however subject specific safety requirements must be adhered to.

Clothing for enrichment in Wren Six

If participating in sport for Enrichment sessions students must:

- get changed using the available changing rooms in the PE department;
- wear **appropriate sportswear**, which is **without large logos/branding**. Sports leggings may be worn;
- wear **footwear in line with PE department expectations (see appendix E)**;
- **remove** all jewellery, hooded items and tie up hair due to health and safety regulations when playing sport.

Expectations for our school community

Students

Students are expected to wear the correct uniform at all times whilst:

- on the school premises;
- travelling to and from school;
- at out-of-school events or on trips that are organised by the school, or where they are representing the school (if required).

Students are also expected to contact their Progress Leader or the Director of Sixth Form if they want to request an amendment to the Uniform Policy in relation to their protected characteristics.

Students are expected to visit the school Swap Shop and correct their uniform if they arrive in incomplete uniform. This must be done as soon as students arrive on the school site.

If a student does not correct their uniform upon arrival they will receive a consequence, removing them from their normal lessons until their uniform is corrected.

Families

Families are expected to make sure their child has the correct uniform and PE kit, and that every item is:

- clean;
- clearly labelled with the child's name;
- in good condition.

Families are also expected to contact Progress Leaders if they want to request an amendment to the uniform policy in relation to:

- their child's protected characteristics;
- a medical need. This must be accompanied by a medical note stating that an element of the uniform cannot be worn.

Families are expected to lodge any complaints or objections relating to the school uniform in a timely and reasonable manner in accordance with our concerns and complaints procedures.

Staff

Staff will publicise and clarify the school uniform and dress code to all students at the start of the academic year, and regularly throughout the year. Staff will provide examples of correct uniform to share with students and families.

Staff will then closely monitor students to make sure they are in correct uniform. They will give any students and families breaching this uniform and dress code policy the opportunity to correct and make their uniform or dress right.

Where breaches of the policy do occur and where students refuse to correct their uniform or dress, consequences will be issued in line with the school Behaviour Policy.

Academy Committee

The Academy Committee will review this policy and make sure that it:

- is appropriate for our school's context;
- is implemented consistently across the school;
- takes into account the views of families and students;
- offers a uniform that is appropriate, practical and safe for all students, at a reasonable cost.

Monitoring arrangements

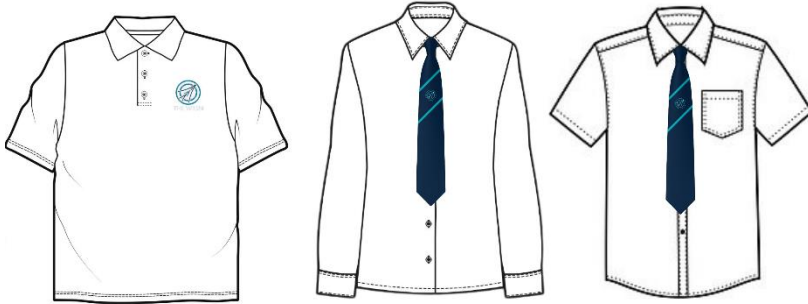
This policy will be reviewed annually by the School Leadership Team. At every review, it will be approved by the Principal and Academy Committee.

Appendix A

Uniform Options

Students will be free to choose from;

A branded white polo shirt, a plain white polo shirt or a plain white buttoned shirt, short or long sleeve, with a branded tie.



Students will be free to choose if they wear any of the three branded top items or a combination of these;

A branded navy blazer, a branded navy V neck jumper, or a branded navy cardigan.



Appendix B

Shoes

| School shoes must be plain black, flat, formal polishable shoes. | | |
|--|--|---|
|   |   |   |
|   |   |   |
| <p>Trainers, trainer like shoes, crocs, sliders, boots or canvas shoes cannot be worn. Logos must not be visible. The Principal will be the arbiter of what constitutes appropriate school shoes.</p> <p>If in doubt, please check with the school before purchasing new shoes.</p> | | |
|  <p>This is a boot.</p>  |  <p>This has a visible branded logo.</p>  |  <p>This is a trainer/trainer like shoe.</p>  |
|  <p>This is a canvas non-polishable shoe.</p>  |  <p>This is not a plain black shoe.</p>  |  <p>This shoe has a canvas toe and is not fully polishable.</p>  |

Appendix C

Skirts

Plain grey pleated skirt to be worn.



Skin-tight or tube-fitting skirts cannot be worn.

If in doubt, please check with the school before purchasing new items of uniform.



This is a skin-tight / tube-fitting skirt.



This is a skin-tight / tube-fitting skirt.



This is a black skirt. Grey skirts must be worn.



Appendix C (continued)

Trousers and shorts

Must be **grey** tailored trousers or shorts, of formal convention cut and length in a plain material.



Any form of skin-tight trousers or short, leggings, jeans, joggers or chinos cannot be worn.

If in doubt, please check with the school before purchasing new items of uniform.



These are skin-tight trousers.



These are black shorts and not formal convention cut.



Appendix D

School Equipment

All students must bring a bag with them each day that is large enough to hold A4 exercise books.

Students are also expected to ensure they have the following equipment in their bags.

- a copy of their timetable;
- a clear pencil case which contains a minimum of;
 - a pen
 - a pencil
 - a ruler
- a scientific calculator, 'Casio fx-83GTX' or similar. (A calculator is not essential and can be borrowed in some lessons or ordered through school).

Appendix E
PE and Dance Kit

Plain black sports shorts, plain black tracksuit bottoms or plain black leggings.

| | | | |
|---|---|--|---|
|  |  |  |  |
|---|---|--|---|

Sports leggings may be worn. These should be Lycra leggings, not cotton. Large logos and branding cannot be worn; small discreet logos are acceptable. Replica sports kits cannot be worn.

Blade shaped studs and metal studs cannot be worn. Astro turf trainers cannot be worn.

If in doubt, please check with the school before purchasing new items of uniform.

| | | | |
|---|--|--|--|
|  <p>Not acceptable: These are cotton leggings with large branding.</p> |  <p>Not acceptable: This is replica sports kit.</p> |  <p>Not acceptable: Plain black polo shirt. Wren PE shirts must be worn.</p> |  <p>Not acceptable: These are metal studded trainers.</p> |
|---|--|--|--|

Appendix F
Wren Six Dress Code

| | | |
|--|--|--|
| Logos, pictures and imagery which is considered acceptable. <i>This is not an exhaustive list.</i> | | |
|   |   |   |
| <p>Acceptable This is an example of a work appropriate polo shirt.</p> | <p>Acceptable This is an example of a work appropriate hooded top.</p> | <p>Acceptable This is an example of a combat trouser. Please note that elasticated trouser cuffs are acceptable.</p> |
|   |   |   |
| <p>Not acceptable This is an example of a replica sports shirt.</p> | <p>Not acceptable This is an example of a Bardot top.</p> | <p>Not acceptable This is an example of a cotton tracksuit bottom.</p> |
| <p>If in doubt, please check with the school before purchasing any items for Wren Six only.</p> | | |