

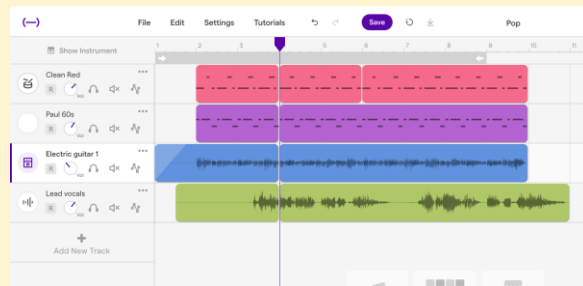
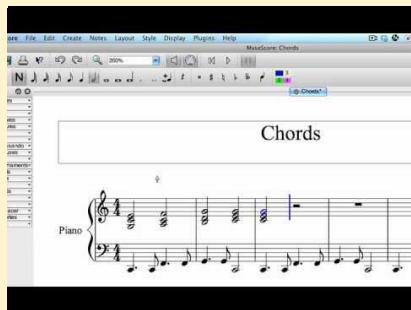
WHAT DO WE STUDY IN MUSIC AT GCSE?

Lots of brilliant extra-curricular opportunities!



1. Performing – perform as a soloist and ensemble on your chosen instrument/voice/DJing

60 % practical coursework – you can choose to focus on what you are passionate about!



2. Composition – compose two of your own pieces using practical skills and music technology

Studying Music will enable you to develop a true passion through creative learning!

There are three sections presented in the extract:

Introduction	Verse 1	Chorus 1
24 bars	32 bars	18 bars

(a) Comment on the use of percussion in the Introduction. [2]

.....

(b) Identify three ways that synthesizers are used in the Introduction. [3]

1.

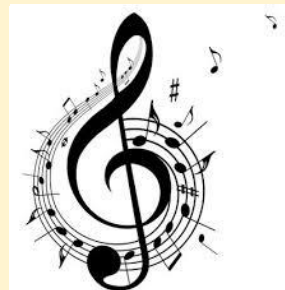
2.

3.

(c) Following the opening 8 bars of percussion, the Introduction then uses a repeated chord progression. Fill in the missing chords in the empty boxes below, giving the chords' full names (eg C major, C minor). NB One chord in Bar 9, and two chords in Bar 10. [3]

Bar 9	Bar 10	Bar 11	Bar 12
—	— Cfm	Cfm	Cfm

3. Listening & Appraising across four areas of study



THE WREN
NURTURE · CHALLENGE · INSPIRE

HOW IS MUSIC ASSESSED AT GCSE?

Component 1: Performing (30%)	<ul style="list-style-type: none">• Total duration of performances: 4-6 minutes• Non-exam assessment: internally assessed, externally moderated• A minimum of two pieces – at least one minute of ensemble, rest can be solo or ensemble
Component 2: Composing (30%)	<ul style="list-style-type: none">• Total duration of compositions: 3-6 minutes• Non-exam assessment: internally assessed, externally moderated• Two compositions: one in response to a brief, one free composition
Component 3: Appraising (40%)	<ul style="list-style-type: none">• Written listening examination: 1 hour 15 minutes• Eight questions in total, two on each of the four areas of study.<ul style="list-style-type: none">- Area of study 1: Musical Forms and Devices- Area of study 2: Music for Ensemble- Area of study 3: Film Music- Area of study 4: Popular Music- Two of the eight questions are based on set works (Toto: Africa and Bach: Badinerie)



WHAT ARE THE TRANSFERABLE SKILLS FROM MUSIC?

Key transferable skills:

- Teamwork
- Communication
- Creativity
- Use of music technology
- Presenting
- Analysis Skills
- Research Skills
- Performing
- Evaluation Skills
- Resilience and Independence



THE WREN
NURTURE · CHALLENGE · INSPIRE



WHERE CAN MUSIC GCSE TAKE YOU?

Typical career paths:

- Composer
- Songwriter
- Lyricist
- Session musician
- Recording artist
- Music therapist
- Music teacher
- Artistic management and promotion
- Producer or DJ
- Conductor
- Sound Technician
- Events Management

For further information, please discuss this evening, or with your child's Music teacher during Progress Evening on **Thursday 5th February 2026**

Or contact the Head of Performance:

- boakman@wren.excalibur.org.uk
- chammond@wren.excalibur.org.uk



THE WREN
NURTURE · CHALLENGE · INSPIRE

